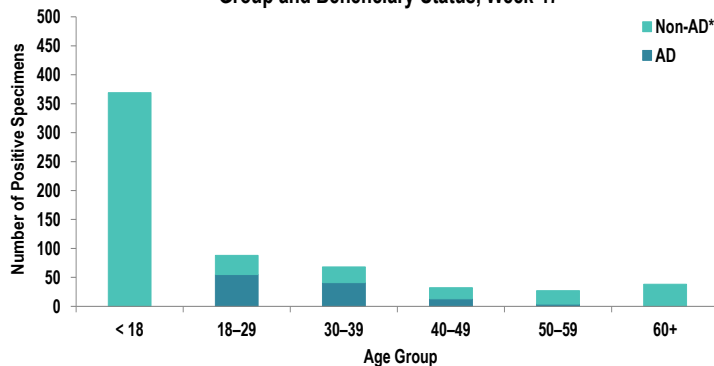


## SUMMARY

Influenza A activity remained stable since week 46 in the Army population. Two hundred and six positive influenza A and sixty-seven influenza B specimens were reported during surveillance week 47. Although respiratory syncytial virus (RSV) activity seemed to decrease in the Army population, this may have been due to decreased testing during the week of Thanksgiving. Two influenza-associated hospitalizations were reported during surveillance week 47. Nationwide, influenza activity is increasing, with 6.2% of specimens tested by clinical laboratories being positive for influenza A or B, according to the Centers for Disease Control and Prevention (CDC). As we are approaching the holidays that typically involve social events, it is strongly recommended to get the flu vaccine, despite it being later in the season. In addition to reducing the chances of severe outcomes if infected, the vaccine aids in reducing the spread of influenza.

## DEMOGRAPHICS

Positive Respiratory Specimen Results from Army MTFs by Age Group and Beneficiary Status, Week 47



**AD:** One hundred and thirteen positive respiratory specimens were collected from active duty (AD) service members (SMs) during week 47; 48.7% (n=55) of the positive specimens were collected from SMs 18 – 29 years of age.

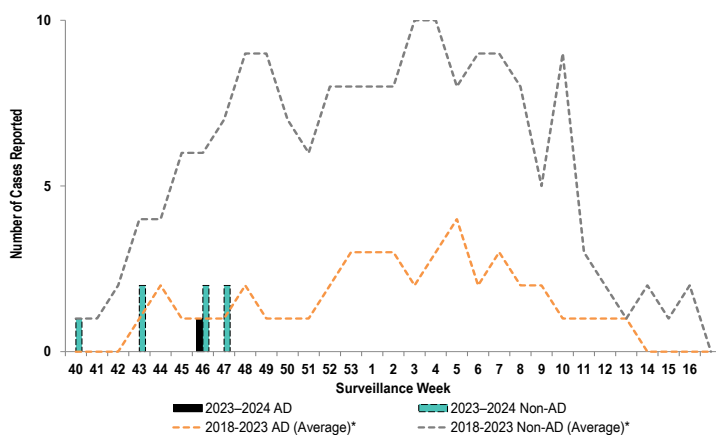
**Non-AD:** Five hundred and nine positive respiratory specimens were collected from non-AD individuals during week 47; 72.5% (n=369) of the positive specimens were collected from individuals under 18 years of age.

\*Non-AD=All individuals that are not active duty service members.

The age and beneficiary status of some cases were not available. Therefore, all calculations involving these variables were conducted using only available data. Differences in total results, and age- and beneficiary status-specific results may be noted throughout the report.

## INFLUENZA-ASSOCIATED HOSPITALIZATIONS

Army Influenza-Associated Hospitalizations Reported in DRSi by Onset Week



Two influenza-associated hospitalizations with an onset date in week 47 were reported to the Disease Reporting System internet (DRSi). The season total thus far is 8 hospitalizations. The week 47 average during the 2018 – 2023 seasons was 8 hospitalizations (with an average of 32 hospitalizations reported from the start of the season through week 47).

The DRSi does not capture cases older than 65 years old for influenza-associated hospitalizations.

\*Data from the 2020–2021 and 2021–2022 influenza seasons are not included in comparison calculations due to the unusually low incidence of influenza.

Data are preliminary and subject to change.

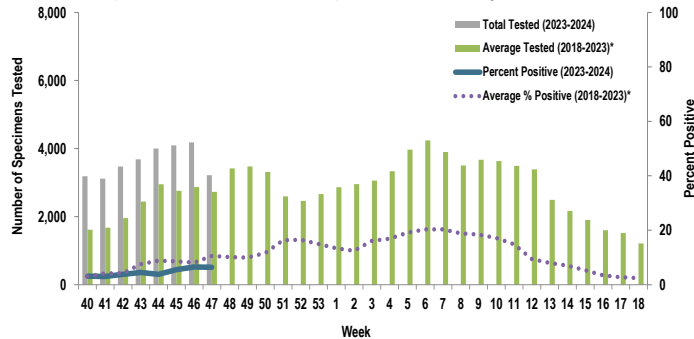
Disclaimer: The mention of any non-federal entity and/or its products is for informational purposes only, and not to be construed or interpreted, in any manner, as federal endorsement of that non-federal entity or its products.

Questions?  
Email [DCPH-A DEP](mailto:DCPH-A@DEP)

## INFLUENZA A ACTIVITY - ARMY

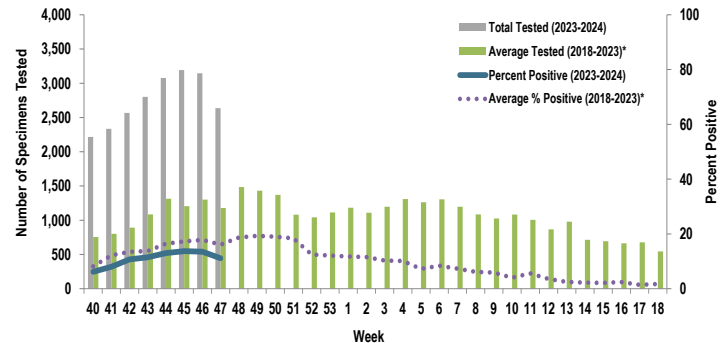
## RSV ACTIVITY - ARMY

Proportion of Positive Influenza A Specimens for U.S. Army, 2023-2024



Of the 3,218 specimens tested for influenza A during week 47, 6.4% (n=206) were positive.

Proportion of Positive RSV Specimens for U.S. Army, 2023-2024



Of the 2,636 specimens tested for RSV during week 47, 11.1% (n=293) were positive. Although a decrease in RSV activity was noted since week 46, this may have been due to decreased testing for RSV.

\*Data from the 2020-2021 and 2021-2022 influenza seasons are not included in comparison calculations due to the unusually low incidence of influenza.

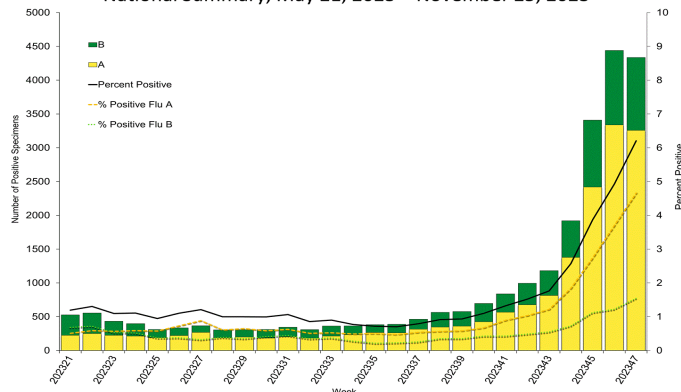
		Week 44	Week 45	Week 46	Week 47	Season Total
Army MTF Laboratory Results, 2023-24	Adenovirus	19	13	11	8	98
	Enterovirus	67	60	55	41	411
	Influenza A	154	226	273	206	1,350
	Influenza B	75	102	101	67	505
	Parainfluenza	8	14	16	7	91
	RSV	399	437	424	293	2,472
	Negative	3,326	3,313	3,344	2,732	24,455
	<b>Total</b>	<b>4,048</b>	<b>4,165</b>	<b>4,224</b>	<b>3,354</b>	<b>29,382</b>

Of the 3,354 specimens tested during week 47, 18.5% (n=622) were positive for any type of respiratory illness. RSV accounted for 47.1% (n=293) of the positive results, influenza A accounted for 33.1% (n=206), influenza B accounted for 10.8% (n=67), enterovirus accounted for 6.6% (n=41), adenovirus accounted for 1.3% (n=8), and parainfluenza accounted for 1.1% (n=7). Additionally, the reported number of specimens tested decreased by 20.6% from week 46 to week 47.

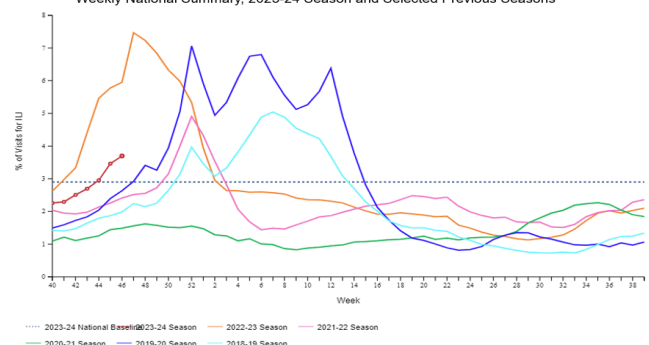
Significantly more tests for influenza have been conducted this season compared to past seasons; 28,955 specimens have been tested for influenza A so far this season compared to the average of 18,995 specimens during the same time period in 2018-2023\*.

## INFLUENZA-LIKE ILLNESS (ILI) ACTIVITY - UNITED STATES

Influenza Positive Tests Reported to CDC by U.S. Clinical Laboratories, National Summary, May 21, 2023 - November 25, 2023



Percentage of Outpatient Visits for Respiratory Illness Reported by The U.S. Outpatient Influenza-like Illness Surveillance Network (ILINet), Weekly National Summary, 2023-24 Season and Selected Previous Seasons

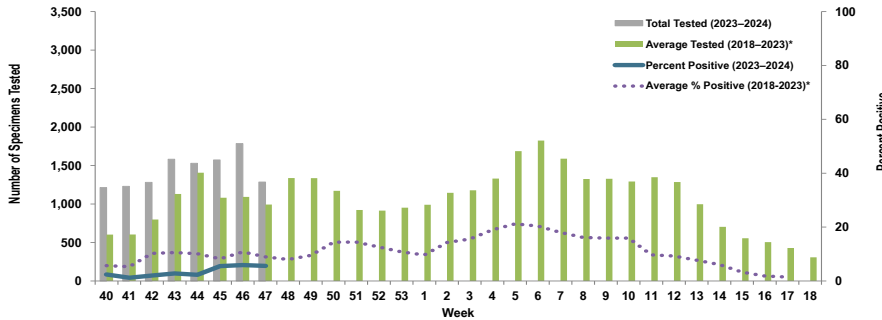


Nationwide in week 47, incident ILI activity was 3.9%; this is above the national baseline of 2.9%. Additionally, a total of 69,884 specimens were tested for influenza by select clinical laboratories and submitted to the CDC; 4,336 (6.2%) were positive. Influenza A accounted for 75.1% (n=3,257) of the total positive specimens.

**Locations providing Week 47 laboratory data as of 29 November 2023:** Camp Zama, Ft. Belvoir, Ft. Bliss, Ft. Campbell, Ft. Cavazos, Ft. Carson, Ft. Drum, Ft. Eisenhower, Ft. Eustis, Ft. Gregg-Adams, Ft. Huachuca, Ft. Jackson, Ft. Johnson, Ft. Knox, Ft. Leavenworth, Ft. Liberty, Ft. Meade, Ft. Moore, Ft. Novosel, Ft. Riley, Ft. Sam Houston, Ft. Sill, Ft. Stewart, Ft. Wainwright, Korea, Landstuhl Regional Medical Center, Redstone Arsenal, Tripler Army Medical Center, the U.S. Military Academy, and Walter Reed National Military Medical Center.

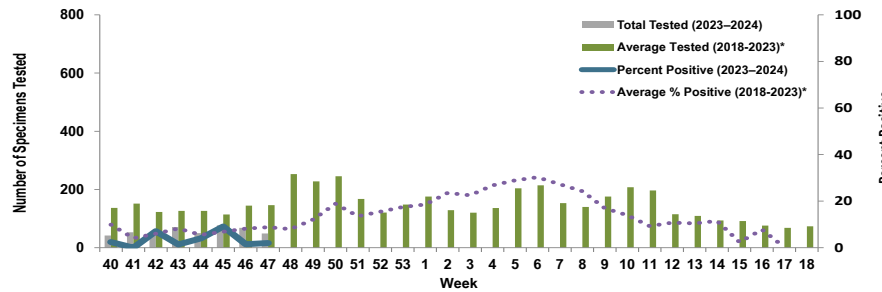
Proportion of Influenza A Positive Specimens by Week and Medical Readiness Command, 2023–2024 as Compared to 2018–2023\*

Medical Readiness Command - East



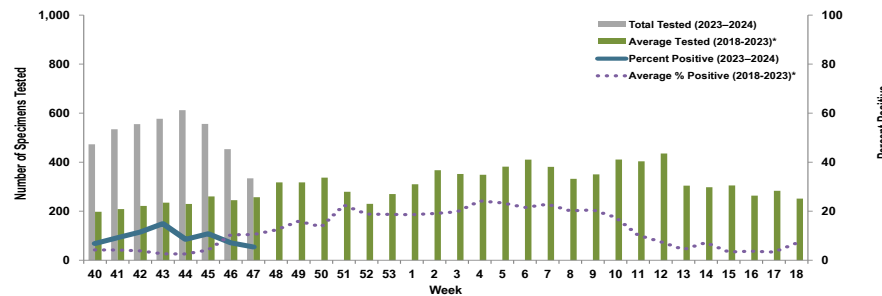
Week 47			
Group	AD	Non-AD	Season Total
< 18	0	29	152
18–29	8	7	112
30–39	3	6	66
40–49	3	7	38
50–59	0	5	21
60+	0	4	23
<b>Total</b>	<b>14</b>	<b>58</b>	<b>412</b>

Medical Readiness Command - Europe



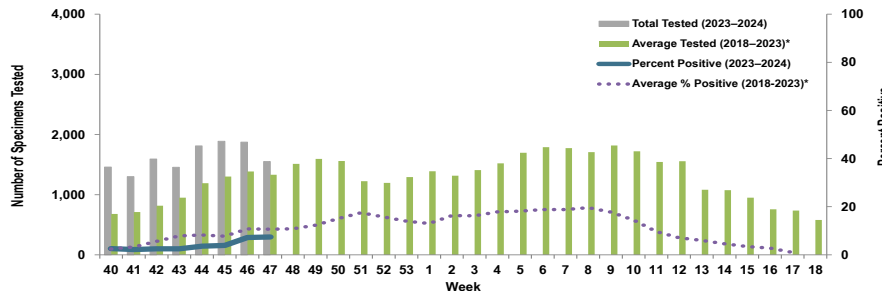
Week 47			
Age Group	AD	Non-AD	Season Total
< 18	0	1	2
18–29	0	0	6
30–39	0	0	4
40–49	0	0	3
50–59	0	0	1
60+	0	0	0
<b>Total</b>	<b>0</b>	<b>1</b>	<b>16</b>

Medical Readiness Command - Pacific



Week 47			
Age Group	AD	Non-AD	Season Total
< 18	0	1	147
18–29	2	2	132
30–39	3	2	61
40–49	2	0	23
50–59	2	2	10
60+	0	2	20
<b>Total</b>	<b>9</b>	<b>9</b>	<b>393</b>

Medical Readiness Command - West



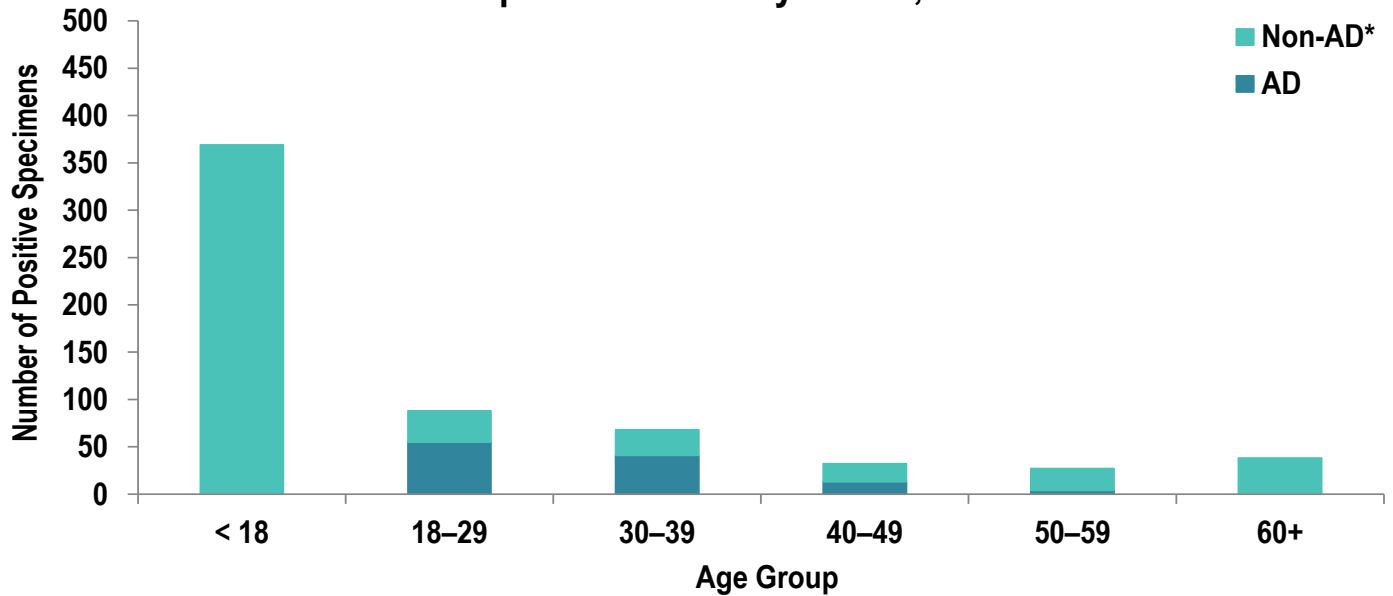
Week 47			
Age Group	AD	Non-AD	Season Total
< 18	0	46	185
18–29	11	12	152
30–39	14	9	84
40–49	2	2	42
50–59	1	9	30
60+	0	9	36
<b>Total</b>	<b>28</b>	<b>87</b>	<b>529</b>

\*2018–2019, 2019–2020, and 2022–2023 influenza seasons. Data from the 2020–2021 and 2021–2022 influenza seasons are not included in comparison calculations due to the unusually low incidence of influenza.

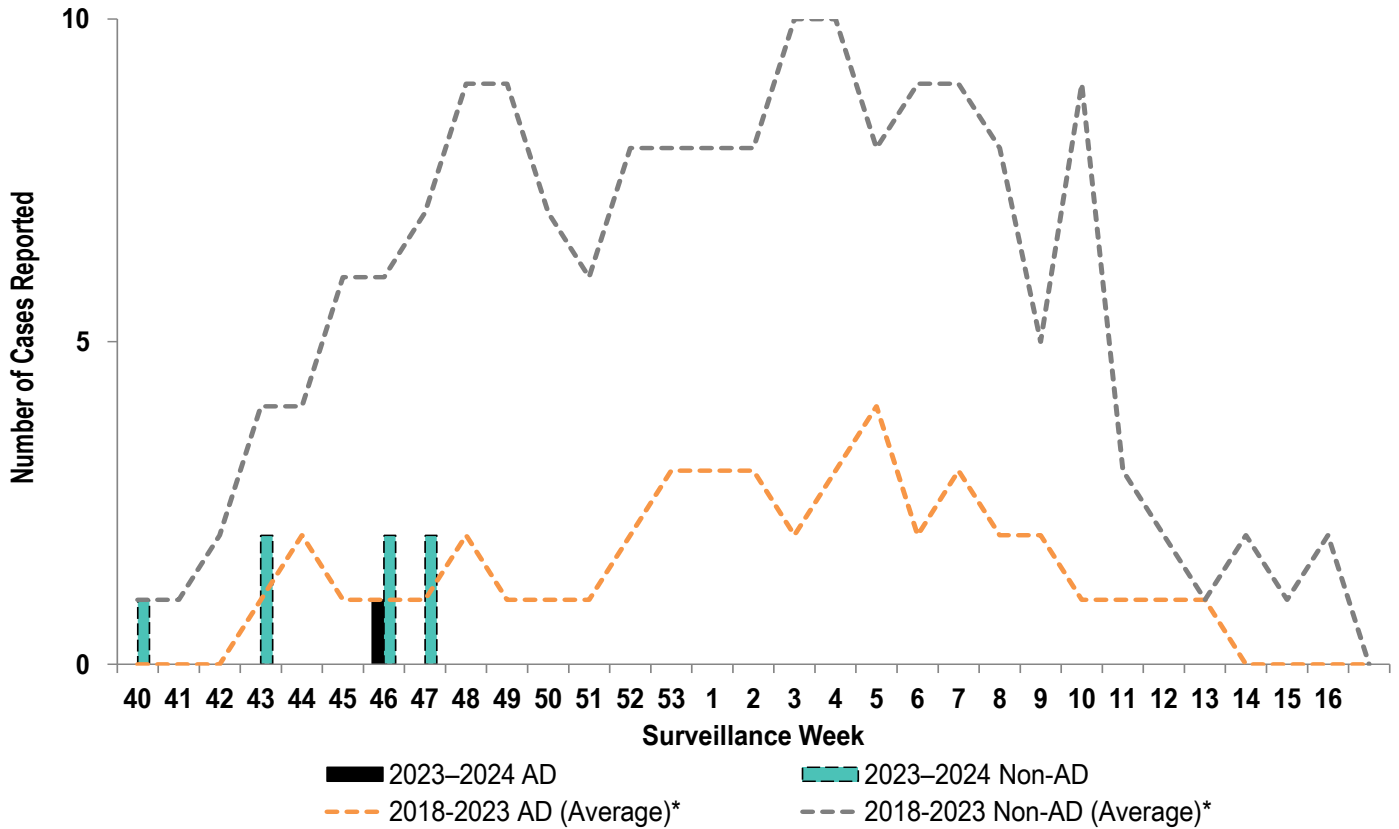
Number of Positive Influenza A Specimens by Region and Duty Status

Region	Week 44		Week 45		Week 46		Week 47	
	AD	Non-AD	AD	Non-AD	AD	Non-AD	AD	Non-AD
MRC-East	10	25	29	57	36	70	14	58
MRC-Europe	1	1	5	2	0	1	0	1
MRC-Pacific	10	42	21	39	10	22	9	9
MRC-West	20	45	19	54	28	106	28	87

### Positive Respiratory Specimen Results from Army MTFs by Age Group and Beneficiary Status, Week 47

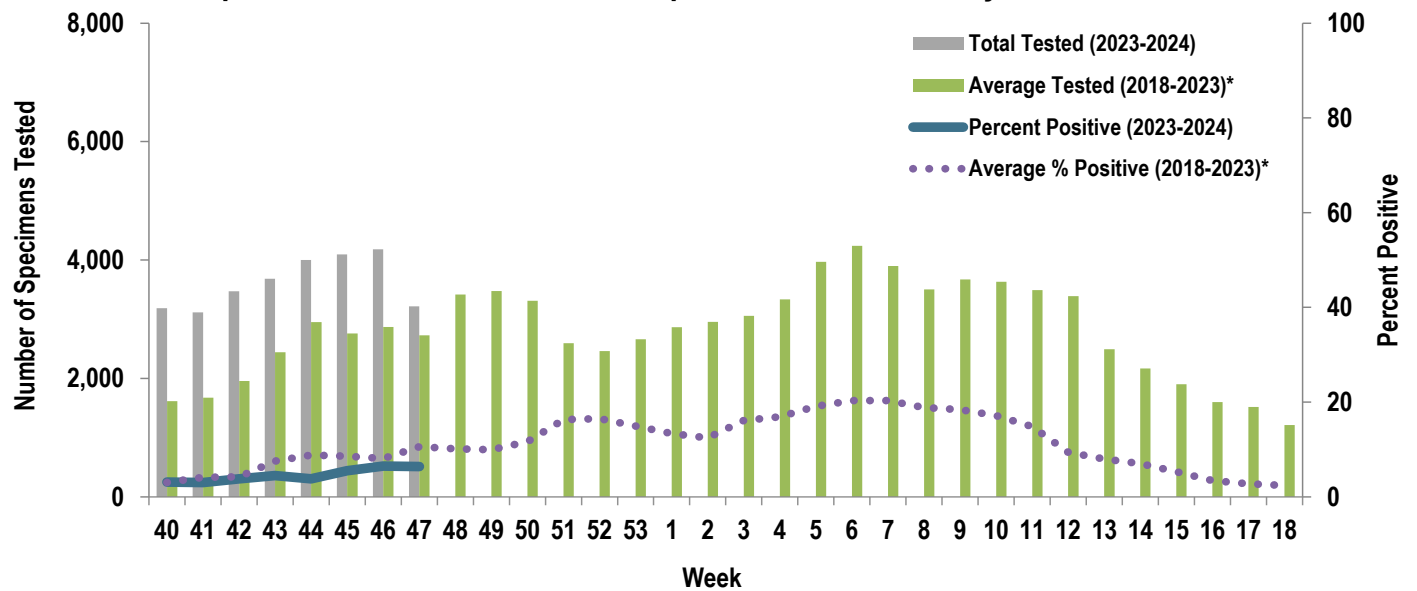


### Army Influenza-Associated Hospitalizations Reported in DRSi by Onset Week



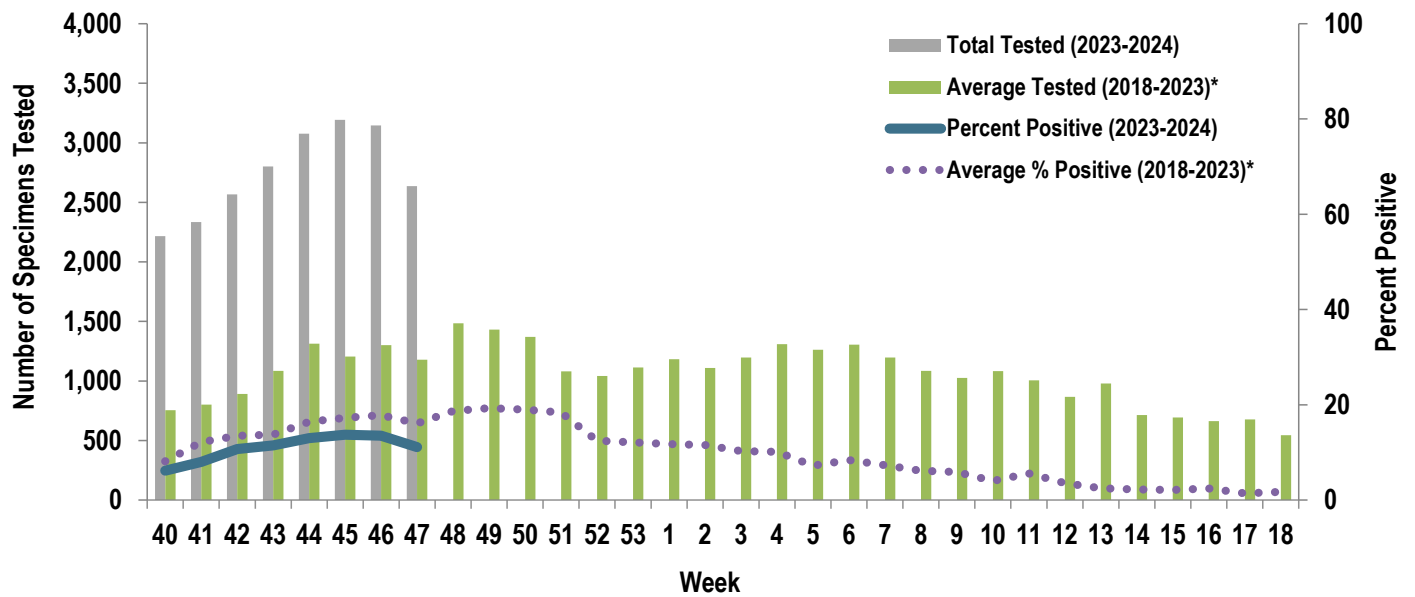
\*2018-2019, 2019-2020, and 2022-2023 influenza seasons. Data from the 2020-2021 and 2021-2022 influenza seasons are not included in comparison calculations due to the unusually low incidence of influenza.

### Proportion of Positive Influenza A Specimens for U.S. Army, 2023-2024



\*2018–2019, 2019–2020, and 2022–2023 influenza seasons. Data from the 2020–2021 and 2021–2022 influenza seasons are not included in comparison calculations due to the unusually low incidence of influenza.

### Proportion of Positive RSV Specimens for U.S. Army, 2023-2024

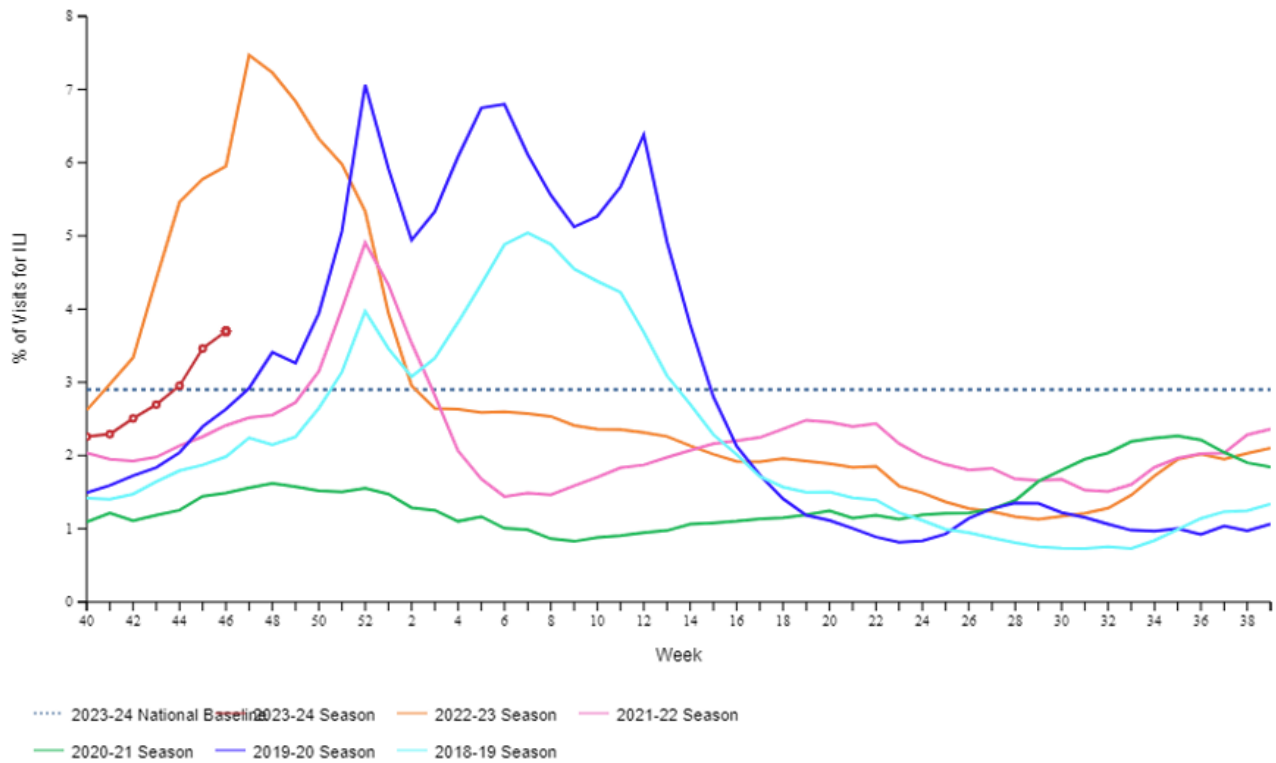


\*2018–2019, 2019–2020, and 2022–2023 influenza seasons. Data from the 2020–2021 and 2021–2022 influenza seasons are not included in comparison calculations due to the unusually low incidence of influenza.





Percentage of Outpatient Visits for Respiratory Illness Reported by The U.S. Outpatient Influenza-like Illness Surveillance Network (ILINet), Weekly National Summary, 2023-24 Season and Selected Previous Seasons





### Influenza Positive Tests Reported to CDC by U.S. Clinical Laboratories, National Summary, May 21, 2023 – November 25, 2023

